

PROSPECTUS



SACHDEVA
COLLEGE OF PHARMACY



CONTENTS

ABOUT US	03	INDUSTRIAL VISITS	22
CAMPUS LOCATION & ITS ADVANTAGES	04	TRAINING & PLACEMENT CELL	23-24
OUR VISION OUR MISSION	05	UNIVERSITY RANK HOLDER STUDENTS	25
CHAIRMAN'S MESSAGE	06	GPAT QUALIFIED STUDENTS	26
PRINCIPAL'S MESSAGE	07	ACADEMIC ACCOLADES 2023-24	27
ACADEMIC OVERVIEW	08-09	COLLEGE COMMITTEES	28-29
SCOPE OF PHARMACY	10-11	SCHOLARSHIP SCHEME	30
COURSES OFFERED AND ELIGIBILITY	12-14	RULES & REGULATIONS	31
INFRASTRUCTURE & FACILITIES	15-20	CONTACT	32
EXTRA CURRICULAR ACTIVITIES	21		



ABOUT CAMPUS

Sachdeva College of Pharmacy is Established by Sachdeva Educational Society (regd.) The Institute is located on the mid way Kharar-Morinda (Chandigarh-Ludhiana Highway). It has been specially designed for the purpose of imparting value based education.

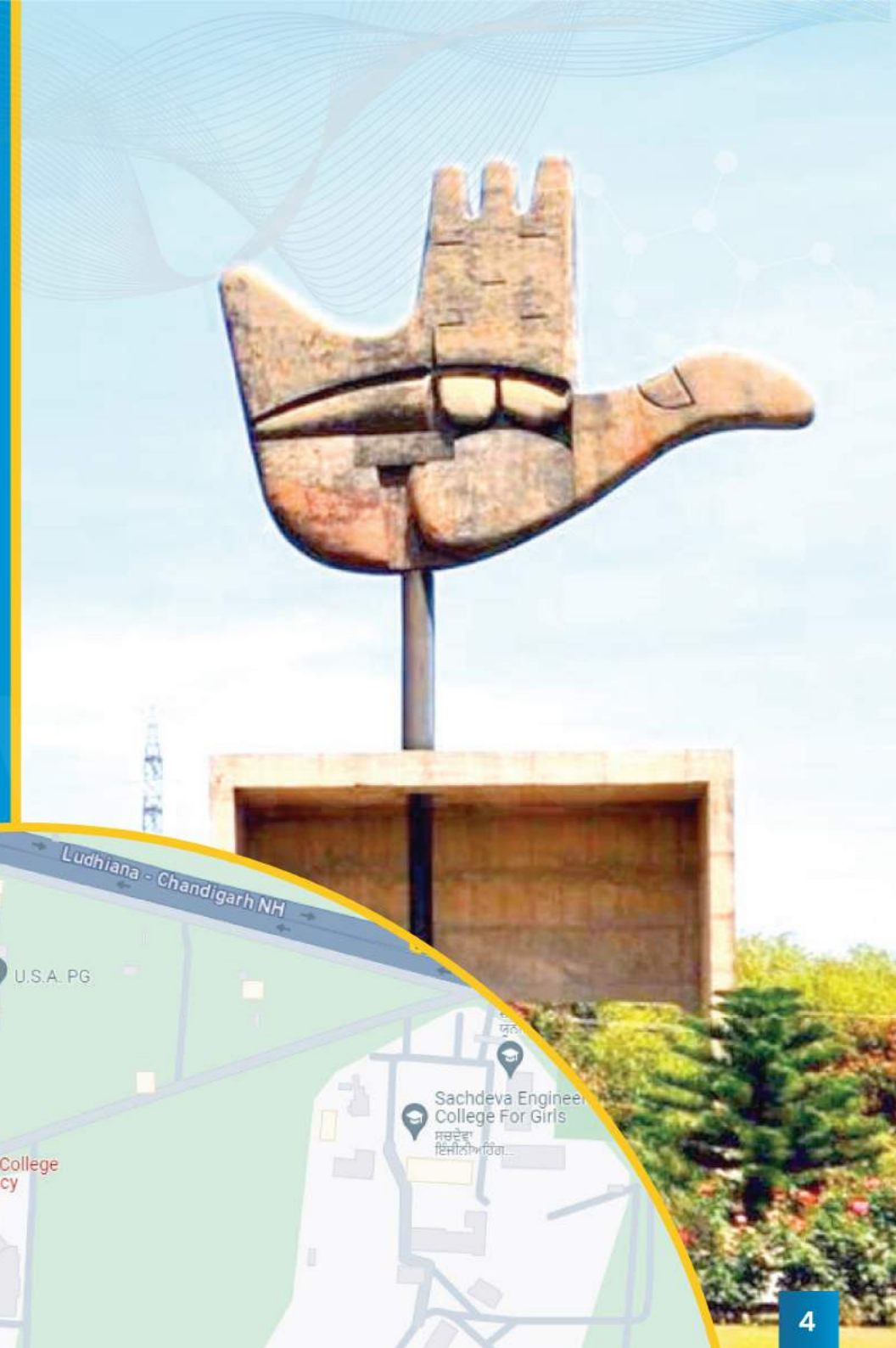
Its foundation was laid by eminent educations and renowned scholars and with the sole aim to bestow top quality education. SCP has been the hub of quality educations ever since it was set up. SCP is the most suitable and conducive place to study as this located at most ideal place at vicinity of city beautiful Chandigarh. The aura at SCP campus is the most conducive for educational learning. Laying thrust on hands on learning the infrastructure provided here is ultra modern along with most sophisticated classrooms and laboratories for practical task. The SCP is renowned for its expert staff and faculty, use of digital and ultra modern technology. The emphasis is always on challenge based case studies and research and development in order to make education relevant to ever changing career dynamics. Alongside the placement record of SCP is also an exceptional one.



CAMPUS LOCATION & ITS ADVANTAGES

Sachdeva College of Pharmacy

The **Sachdeva College of Pharmacy** is situated in a safe and secure environment near Chandigarh, the City Beautiful. The Campus has a wonderful ambience, lush green surroundings and the buildings are with unique architectural designs. Sachdeva College of Pharmacy is on the Chandigarh- Ludhiana Highway, a 20 minutes drive from Chandigarh that makes the campus easily accessible by public transport also. The campus is surrounded by the industrial belts of Chandigarh, Mohali, Morinda, Ludhiana, Ropar and Patiala. All these are rapidly growing and expanding industrial towns in the region.



SACHDEVA
COLLEGE OF PHARMACY





OUR VISION



The College of Pharmacy is dedicated to fostering graduates and professionals who will maximise the health of the public by advancing patient care and facilitating the discovery, understanding, and cost effective use of medicines. We pursue excellence in education and scholarship. We have the responsibility to assure that our graduates will safeguard the health of the public.

Sky is the limit !!

SCP has not just a rich heritage of education ever since it but it has developed a culture of producing outstanding professionals session per session ever since it was set up in 2008. since then it has constantly been climbing the ladder of success reaching new milestones and setting benchmarks year after year thanks to exceptional faculty and cutting edge research and innovation. No wonder it is one of the most reputed institutes in regions and is the most preferred choice of all bigwigs who want to incorporate the best talent in Pharmacy Streams.

OUR MISSION



Our graduates are competitive with those from any pharmacy program in the country, equalling or exceeding other graduates in scientific knowledge; clinical expertise; and their ability to think broadly, address complex problems, and adapt to diverse environments.

There is community within the faculty and staff that is premised on collegiality, mutual trust, respect, honesty, and integrity. We value diversity within our faculty, staff, students, teaching, and scholarship in helping us to be better members of our community and society.





Chairman

S. Brij Pal Singh Sachdeva

Sachdeva College of Pharmacy

Chairman



Message

In the emerging highly competitive world, there is an obvious need to produce dynamic minds that can adapt to the changing scenario and complex situations and are innovative enough to face diverse challenges effectively. SCP is truly emerging as the nurturing ground for leadership. It is becoming synonymous with practical, industry-focused education and is attracting students across the globe. Since the mission of the SCP is to impart quality education, it constantly strives to attract good faculty, good students provide good infrastructure and purposeful supportive environment in its Institutions. There can be no half measures when it comes to quality.

We spare no effort to inculcate the quality philosophy into our people. Because, while it is our people who make a difference, it is quality that gives an edge. With students fired with determination to excel, a competent and dedicated faculty, meticulously designed curricula and the optimum infrastructure, the SCP has grown to be a reckoning force in the world of education. I warmly welcome the aspiring students into the SCP fraternity. I hope you have a tremendous learning and joyful time at SCP.

Principal's



Message

*The **Sachdeva College of Pharmacy** was established in 2004 with a goal to impart quality education, skills, and knowledge. The philosophy of the institute is to transform and redefine the educational process in order to create a new system that is able to produce a new generation of professionals. In this short span of time, college has achieved new heights in academics and co- curricular activities. Sachdeva campus is set in the serene and lush green surroundings of Kharar which provide a desirable environment for academic acquisition as our students are protected from pollution and external disturbances. The institute is equipped with the best infrastructure to prepare students to become successful professionals. Students in the institute are trained to convert innovative ideas into attainable and practical models to meet the growing demand of the pharmaceutical industry. Results of students are credentials of the institute and tell about the quality of education imparted in the institute. We have highly dedicated, qualified, enthusiastic and exceptionally brilliant faculty to ensure betterment of students in every aspect and to uplift students of rural areas. A number of companies are visiting the campus for placements. The placement cell is in constant contact with the leading industries. I believe that any student of our group will never face any difficulty to get employment as well as opportunity for higher studies.*

I heartily welcome all the students into our family and wish them a positive phase of learning and enjoyable stay at SCP.





SACHDEVA
COLLEGE OF PHARMACY

Academic Overview

SACHDEVA
COLLEGE OF PHARMACY



Academic Overview

Academic programmes are the core of the Institute functions. They comprise three basic activities – education, research and services. SCP takes great pride to state that students are a perfect blend of "Strategy" and "Execution". We train our students to the very core of education with the help of theoretical learning & practical demonstrations of every process from start till end of life cycle for a product or service. We take students through all the steps in transformation to smart, confident & intelligent technocrat. The academic activities are currently divided between Departments and Laboratories. The emphasis in the departments is on education and theoretical research, while that of the laboratories is on interdisciplinary research and service. The departments are responsible for getting the students through the theoretical curriculum which leads to award of degrees, while the laboratories are primarily engaged in assisting the students to gain hands on practical knowledge

- ◆ Established in 2004
- ◆ **Approved by & Affiliated to**
 - Pharmacy Council of India (PCI)
 - I K Gujral Punjab Technical University (IKGPTU)
 - The Punjab State Board of Technical Education and Industrial Training

SACHDEVA
COLLEGE OF PHARMACY

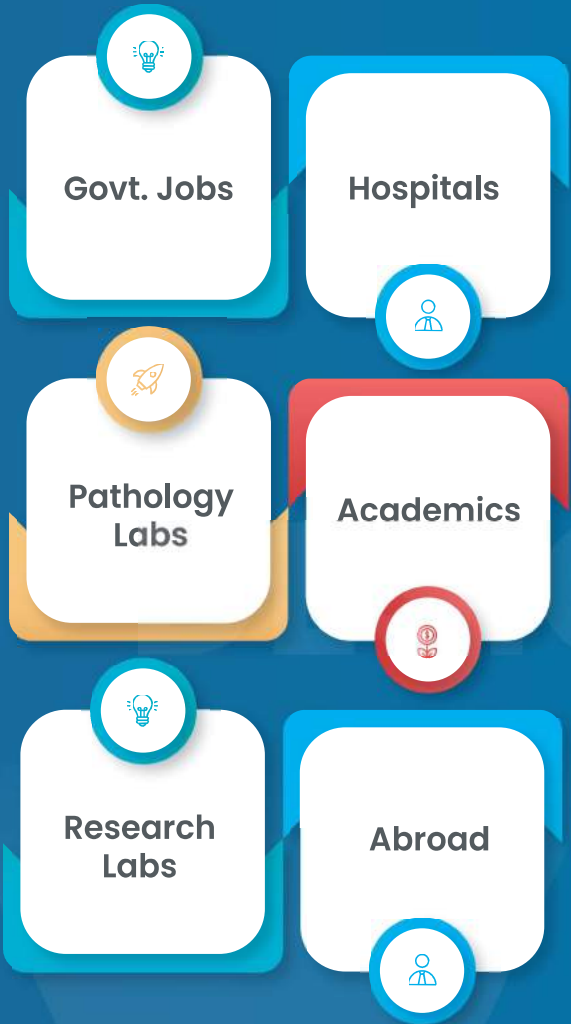




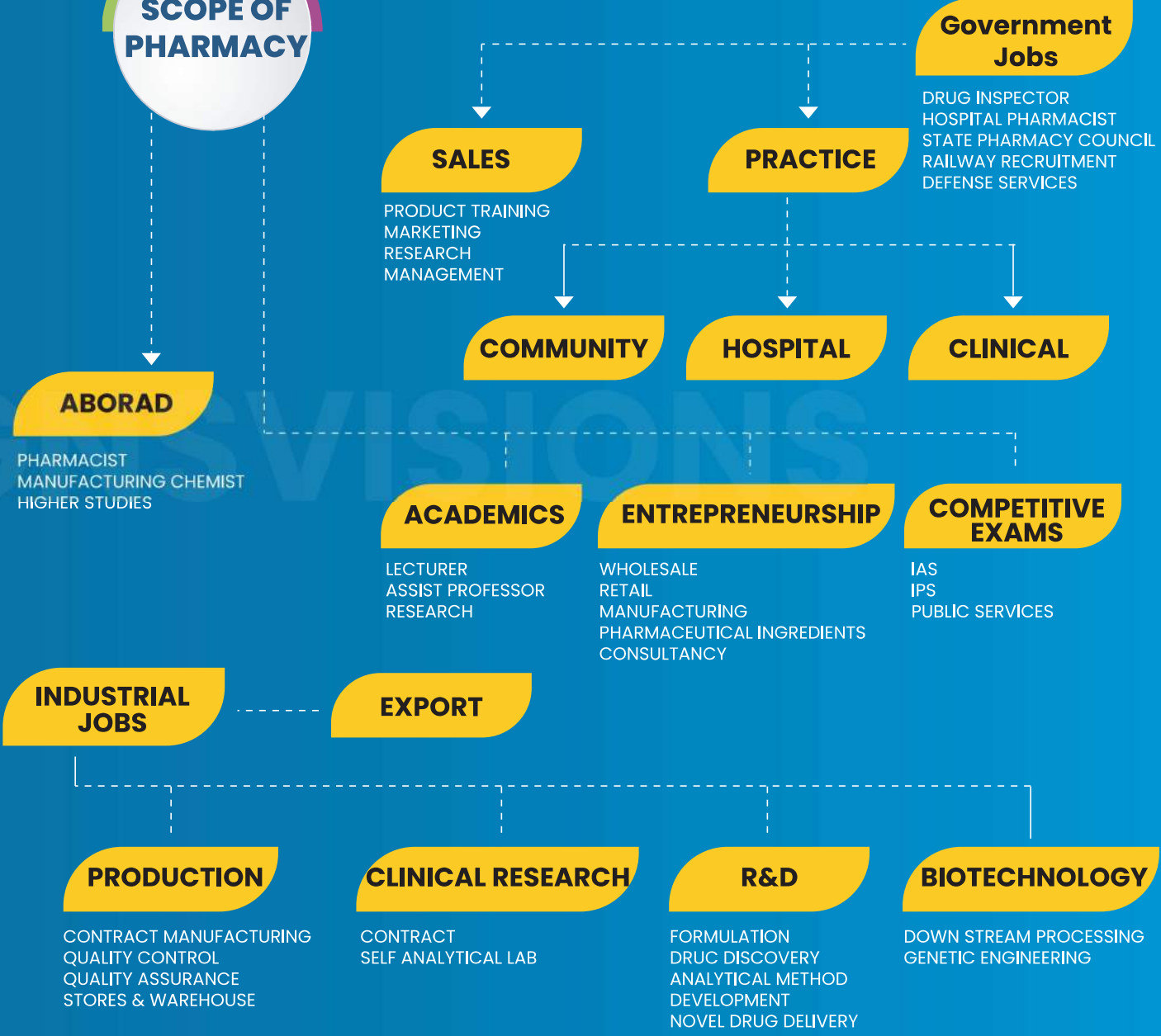
SCOPE OF PHARMACY

The scope of pharmacy extends beyond employment, specifically, individuals can also opt for higher education as well. Pharmacy is a relatively stable career and there are always open job positions with scope for advancing to the next level. Some of the options Pharmacy students can look into have been elaborated below.

Scope of BSc-Medical Lab Science



SCOPE OF PHARMACY



Courses Offered and Eligibility:

SR.NO.	DISCIPLINE	DURATION	ELIGIBILITY	INTAKE
1.	D. Pharmacy	2 Years	10+2 with Medical/Non Medical by recognized university/board	60 SEATS
2.	B. Pharmacy	4 Years	10+2 with Medical/Non Medical by recognized university/board	100 SEATS
3.	B. Pharmacy (Lateral Entry)	3 Years (Direct Entry to 2nd Year)	D. Pharmacy from PCI approved institutions with 45% marks in general category and 40% in reserve category	10 SEATS
4.	M. Pharmacy (Pharmaceutics)	2 Years	B. Pharmacy Degree from PCI approved institution with minimum 55% marks	15 SEATS
5.	B.Sc. (Medical Lab Sciences)	3 Years	10+2 with Medical/Non Medical by recognized university/board	30 SEATS



Diploma in Pharmacy or (D.Pharma) is an undergraduate Diploma Course. Pharmacy is a medical field involved in the preparation, dispensing and appropriate use of medication meant for therapeutic purposes. The course provides the minimum qualification to become a Registered Pharmacist in India.

Bachelor in Pharmacy (B. Pharmacy) is an academic graduation degree in the field of Pharmacy. It is a four-year program with a semester system. In order to be eligible, one must pass 10+2 with medical/non medical background or its equivalent examination conducted by a recognized university/board/council. Pharmacy holders with 45% marks for General or 40% marks for reserved categories are eligible for admission into B. Pharmacy into the second year directly via Lateral entry.

Master of Pharmacy (M. Pharmacy) is a postgraduate academic degree in the field of Pharmacy after completion of B. Pharmacy degree. M. Pharmacy course is usually of two years duration. The M. Pharmacy courses are offered by pharmacy colleges leading to entry into the pharmacy profession. B. Pharmacy graduates can further apply for M. Pharmacy that is a two year program in various fields i.e. Pharmaceutics, Pharmacognosy, Pharmacology, Pharmachemistry, Pharmaceutical Analysis and Clinical Pharmacy. This degree offers advanced training to graduates of a Bachelor of Pharmacy as it comprises two Academic semesters and one year Research project that improves the pharmaceutical skill of the student.

Sachdeva College has also introduced Master degree in Pharmaceutics and for that Pharmaceutics Research laboratory has been established having instruments such as rotary vacuum evaporator, microbalance, magnetic stirrer with hot plate, dissolution apparatus, disintegration apparatus, pH meter, refrigerator, UV-Visible spectrophotometer, IR spectrophotometer, vacuum filtration assembly, HPLC and distillation unit.

Bachelor of Science in Medical Laboratory Science (B.Sc. MLS) is a three year (6 semesters) program that provides theoretical as well as practical knowledge of diagnosis of different types of diseases through the use of different techniques such as haematological, microscopically and bacteriological techniques. B.Sc. MLS students have the opportunity to work as laboratory technologists in hospitals and medical laboratories.



Course Structure of B. Pharmacy

Course Duration: 04 Academic years / 08 Semesters

Jul – Dec: Odd Semesters (1,3,5,7)

Jan–May: Even semesters (2,4,6,8)

June: Hospital/Industrial training

Hospital/Industrial training of four weeks in summer vacations after 2nd, 4th Semester and 6th Semester is compulsory to have the practical knowledge of the profession.

Practice School in 7th Semester and Project Work in 8th Semester requiring practical work during the semester.

Course Structure of D. Pharmacy

Course Duration: 2 Year Diploma course

Pattern: Yearly

Award of the Degree: Diploma will be awarded for those passing in both the years as per rules and regulations.

Duration of the Course: The duration of the course shall be for two academic years, with each academic year spread over a period of not less than one hundred and eighty working days in addition to 500 hours practical training spread over a period of not less than 3 months.



Course Structure of M. Pharmacy (Pharmaceutics)

Course Duration: 02 Academic years / 04 Semesters

Jul – Dec: Odd Semesters (1, 3)

Jan–May: Even semesters (2, 4)

This degree offers advanced training to graduates of a Bachelor of Pharmacy as it comprises of two Academic semesters and one year Research project that improves the pharmaceutical skill of the student.

Course Structure of B.Sc.- Medical Lab Science

Course Duration: 03 Academic years / 06 Semesters

Jul – Dec: Odd Semesters (1, 3, 5)

Jan–May: Even semesters (2, 4, 6)

B.Sc. MLS is a three year (6 semesters) program that provides theoretical as well as practical knowledge of diagnosis of different types of diseases through the use of different techniques such as hematological, microscopically and bacteriological techniques. B.Sc. MLS students have opportunity to work as laboratory technologist in hospitals and medical laboratories.

Evaluation System

- External (University/Non-University Exam.) = X Marks
- Internal Assessment = Y marks
- (Y Marks = Attendance, Assignments, Mid Sem. Test Performance)
- **Total Marks = X+Y Marks**
- Internal Assessment
- Two Mid Semester Tests (MST) i.e. Sessional Exams are compulsory – Average of two tests will represent one part of total internal assessment.
- Attendance plays an important role in increasing your understanding about the subject, and this is also rewarded in the form of marks in the internal assessment.
- Assignments: Student-Teacher interaction is essential in any process of learning and some marks are reserved as a part of internal assessment.
- The internal assessment awards of a candidate who fails in the external examination of that subject will be carried forward to the next examination.



INFRASTRUCTURE & FACILITIES

Wi-Fi Campus Connectivity

Campus is having 100 MBPS of high speed internet facility. The institute has 24X7 Wi-Fi facility in the college campus for the student and faculty members to avail internet connection at any place in the college, hostel & faculty houses. The connectivity through a fully networked campus with state-of-the-art IT infrastructure, computing & communication resources, offers students the facilities of e-mail, net surfing, up/down loading of web based application, besides helping them in preparing projects & seminars.

Health Centre

The students are provided with immediate free medical attention in the campus through the services of qualified doctors. We have highly qualified person with plenty of experience and is kind in nature. All the first aid treatment for fever, headache, muscle pain and more are given as quickly as possible.





Herbal Garden

The herbal garden is a place where various medicinal plants have been planted and nurtured. It includes the plants like aloe vera, arjuna, patharchat, nirgundi, black pepper, datura, amla, safed musli, clove, stevia etc. this is a exclusive collection of commonly used medicinal plants, where students can actually see these varieties and correlate with their theoretical knowledge.

Library:

Library has around 25000 books of around 700 different titles and 16 National & International Journals. Library also has DELNET subscription to encourage research and advanced learning. It provides easy access to books and journals. The library is updated every year and newer journals, books and abstracts are added to it.

This helps the faculty members and all students to keep themselves aware of recent developments in the pharmaceutical sciences. The library is kept open for the students from morning till late in the evening.

Our library is provided with a BOOK BANK FACILITY in which the students can keep the books for the whole semester on nominal charges. This enables students to read the books throughout the semester without any fear of return by the due dates during the semester.

Cafeteria & Tuck-shop – Moment to enjoy

Refreshment joints throughout history have always been the ideal centers all over the world where brilliant minds congregate and great concepts originate. It is also the place where diverse culture has created well organized spaces for cafeterias and refreshments.

Sports Complex

SCP provides indoor and outdoor games facilities to the students for their overall development. Institute also provides opportunities to students to participate in Annual Intra and Inter College Tournaments

Pharmacy Club:

- Club is run exclusively by the students with the guidance and support of advisor(s) from the faculty.
- This club provides students with an opportunity to combine various aspects of academic and vocational learning into personal action.
- It helps to learn leadership, technical & communication skills.
- It also helps to develop team spirit & to improve confidence level.





HOSTEL FACILITIES

The hostel is a special place where we have created a "Home away from Home" with space for each student in secure and caring environment. Sachdeva Girls Campus provides the hostel facility with following amenities:

- Safe and Secure environment
- Fully guarded inbuilt hostel accommodation
- AC and Non AC accommodation with well furnished rooms
- Hot water, drinking water coolers, study room, sick room & TV room
- Hygienically cooked meal
- Wifi Campus
- Gym with adequate space along with all modern equipments
- Indoor and outdoor game and sports facilities i.e. chess, table tennis, badminton, football, volleyball etc.
- College hostel provides fortnightly visit to city

SACHDEVA
COLLEGE OF PHARMACY

Laboratories:

B. Pharm and M. Pharm Labs

Analysis Laboratory

This laboratory mainly deals with analytical chemistry i.e. study and use of instruments and methods to separate, identify and quantify matter. Mainly two classical methods of analysis are applied.

- ❖ Qualitative analysis (Identify analytes)
 - Chemical Test
 - Flame Test
- ❖ Quantitative analysis (Determine the numerical amount and concentration)
 - Volumetric Analysis
 - Gravimetric Analysis
- ❖ Instrumental methods- Spectroscopy (UV, Flame and IR)
- ❖ Electrochemical analysis- Potentiometry, voltametry, amperometry
- ❖ Instrumental methods- Spectroscopy (UV, Flame and IR)
- ❖ Electrochemical analysis- Potentiometry, voltametry, amperometry
- ❖ Thermal analysis- Calorimetry and Thermogravimetric analysis
- ❖ Separation- Column chromatography, paper chromatography and HPLC.

Pharmaceutics Labs

- ❖ This laboratory provides elementary knowledge about the manufacturing and evaluation of pharmaceutical preparations such as Creams, lotions, aromatic waters, liniments, ointments, syrups, suppositories etc. This lab is also utilized to teach about the dispensing of drug formulations and for above purpose this lab is equipped with following equipments:
- ❖ Autoclave, Dissolution Apparatus, Disintegration Apparatus, Heating mantle, Homogenizers, Hot plate, Magnetic Stirrer, Percolators, Weighing Balance, Water Bath, Mortar pestle.

Pharmaceutical Biotechnology/Microbiology Lab

- ❖ Experiments related to identification of microorganisms, their cultivation in different media and evaluation of antibiotics against them is carried out in this laboratory. Here students are made aware by using following instruments:
 - Hot air oven, BOD Incubator, Laminar air flow, Refrigerator, U.V. Chamber, HEPA Filter, Tissue culture station, Compound microscope, Polarizing microscope.

Human Anatomy and Physiology Laboratory

- ❖ The HAP lab begins with anatomical terminology and an orientation to the body, which together provide the necessary tools for studying the various body systems. The various models are used to depict the anatomy of human body e.g. model of Human Skeleton, Eye, Ear, Heart, Digestive System, Urinary system etc.
- ❖ This lab consists of instruments like:
 - Haemoglobinometer
 - Haemocytometer
 - Sphygmomanometer

Pharmacognosy Lab

- ❖ In this laboratory for B. Pharm. course, there are crude drugs mentioned in the syllabus along with basic apparatus like simple and compound microscopes, Soxhlet apparatus, Clevenger's apparatus etc. also, there are wall charts describing histology of various crude drugs. The major instruments include:
 - Muffle furnace
 - BOD incubator
 - Microtome
 - UV Cabinet
 - Projection microscope
 - Water distillation unit
 - Water bath, hot plates
 - Compound microscopes
 - TLC chambers, applicator, plate maker etc.

For Diploma

- Pharmaceutics Lab.
- Biochemistry, Clinical Pathology, Hospital and Clinical Pharmacy Lab.
- Pharm. Chemistry Lab.
- Physiology, Pharmacology and Pharmacognosy Lab.

In addition to the laboratories, balance room, aseptic room or cabinet, a machine room and Central Instrumentation room are also available.

EXTRA CURRICULAR ACTIVITIES



INDUSTRIAL VISITS

The industrial visits are integral to our curriculum as they provide students with a holistic understanding of the pharmaceutical sector. The visit aims to provide students with practical exposure to the pharmaceutical manufacturing processes, packaging, machine learning, quality assurance, and quality control procedures. In a significant educational initiative, pharmacy students from our college regularly go on such visits to various reputed Industries.

SACHDEVA
COLLEGE OF PHARMACY

The Industries visited so far are:

- **Indian Drugs and Pharmaceuticals Ltd. (IDPL) Rishikesh, (UK)**
- **Sun Pharmaceutical Industries Limited Mohali**
- **Alkem Laboratories Baddi**
- **BRD MediLabs, Baddi**
- **Venus Remedies, Baddi**
- **IPZAH Pharmaceuticals Pvt. Ltd.**
- **Crius Life Sciences Pvt. Ltd. Baddi**
- **Beta drugs Limited Baddi**
- **Galpha laboratories Ltd. Baddi(HP)**
- **Scott-Edil Advance Research Laboratories and Education Ltd. Baddi**
- **M/s Rishabh Healthcare Pharmaceuticals Pvt. Ltd., Panchkula, Haryana.**
- **Alaina Pharma, Baddi (HP)**
- **Cachet Pharmaceuticals Pvt. Ltd. Baddi, Solan**

Training & Placement Cell



Objectives of Training and Placements Cell

- Students are given training by experts to improve their skills required for placements like Resume Writing, Communication Skills, Written Tests, Group Discussion, Technical and Personal Interviews.
- Conducting guest lectures by experts and industrial giants. Organizing industrial visits and training.
- Developing the personality of the students for improving their employability, counseling and grooming for placement.
- To carry out necessary liaison with top Indian and International companies for campus placement and to ensure placement of all eligible students.
- To motivate and counsel students about industry practices and improve their emotional quotient.
- To assist students with the help of concerned department, in arranging Summer Training Internship.
- The leading companies are invited to campus for taking part in the placement process on mutually convenient dates.

Initiatives by Training and Placement Department

- Regular Personality Development Programs
- Personality Development Programs are organized by Training and Placements Cell for the overall development of students.
- The aptitude tests are conducted on a weekly basis. They are arranged so the students can practice the tests before the placements.



PLACEMENTS

Placements

SCP has always given augmentation and placements an utmost priority and to implement it into action an exclusive training, augmentation and placement assistance cell (T&P) has been established with state of art facilities. The cell is headed by experienced professional from industry. T&P Cell is responsible for conducting following activities in time bound schedules without violating the time table of university Curriculum.



NAME OF ALUMNUS/ALUMNA	EMPLOYER
Jyoti Kumari	Wockhardt Ltd.
Charanjit Singh	Intas Pharma
Davinder Kumar	Torrent
Dinesh Kumar	Lupin
Honey Sharma	Panacea Biotech
Surinder Sharma	Panacea Biotech
Gagandeep Verma	Mrs Bectar
RajniKant Sharma	Symbiosis Pharmaceutical Lab.
Anil Kumar Panday	Intas Ahmedabad, Gujrat
Monika Kapila	Govt. Pharmacist, Himachal
Ritu	Paraxel, Mohali
Sat Paul	Ind-Swift, Derabassi
Shashi Pal	Cipla, Baddi
Sandeep Singh	Cipla, Baddi
Vinay Kumar	Mcleaod Baddi
Iqbaljit Kaur	Asstt. Prof. Lovely Professional University
Rutika	USV ,Baddi
Ankush Gupta	Health Biotech Ltd., Baddi
Gaurav Dwivedi	Zydus Cadila, Ahmedabad
Abhishek	Pharmaceuticals, Baddi
Puneet	InovaCapTab, Baddi
Gaurav Mandhotra	Dr Edwin, Mohali
Priyanka Dogra	Pharma Edge Consultants, Panchkula (HR)
Karamjeet Kaur	Casca Remedies Pvt.Ltd., Ambala (HR)
Priyanka Rana	Casca Remedies Pvt.Ltd., Ambala (HR)
Satinder Kumar	Mc Neil & Argus Pharmaceuticals Ltd.
Dilpreet Singh	Own Business
Gurkirat Kalra	Marketing of Pharmaceuticals
Neha Vista	Competitive examination preparation
Nayanjyoti Sharma	Sun Pharma, Assam
Biplav Medhi	Sun Pharma, Assam
Biswajit Barman	Sun Pharma, Assam
Jyoti Rani	Pharmaceuticals
Abuzar Siddiqui	Sun Pharma, Mohali

Mukul Chandhary	Aristo Pharma
Narender Singh	Own Business
Parwez Alam	Abbott
Akshay Thakur	Abbott
Taranveerinderdeep Singh	Theon Pharmaceuticals
Bikash Ranjan Bora	Sun Pharma, Assam
Rahul Saikia	Sun Pharma, Assam
Sudesh Kumar	Apollo
Ambika Gupta	Nixon Biotech Pvt. Ltd
Jyotika Sharma	Abbott
Ravinderjeet Singh	Panacea Biotech



University Rank Holder Students

B Pharm

NAME	SEMESTER	BATCH	SGPA	RANK
Jatin Makker	5 th	2017	09.23	04 th
Ishpreet Kaur	5 th	2017	09.23	04 th
Komal	5 th	2017	09.08	07 th
Ashish	3 rd	2018	09.00	08 th
Harmanpreet Kaur	3 rd	2018	09.00	08 th
Jyoti Pathak	3 rd	2018	09.00	08 th
Ribika	3 rd	2018	08.83	10 th
Parminder Kaur	1 st	2019	09.00	09 th
Jatin Makker	4 th	2019	09.14	02 nd
Komal	4 th	2019	08.93	04 th
Sandeep Kaur	4 th	2019	08.86	05 th
Ishpreet Kaur	4 th	2019	08.79	06 th
Renu Sharma	4 th	2019	08.50	10 th
Nimrat Kaur	8 th	2019	08.71	10 th

M Pharm (Pharmaceutics)

NAME	SEMESTER	BATCH	SGPA	RANK
Ravinderjeet Singh	1 st	2019	09.00	09 th
Pooja Babbar	2 nd	2019	08.92	02 nd
Shilpa Dhiman	2 nd	2019	08.23	10 th





Junaid UI Hamid

GPAT-2020

B.Pharm. (2016-2020 Batch)



Jaspreet Kaur

GPAT-2020

B Pharm. (2016-2020 Batch)



Kirpal Singh

GPAT-2020

B Pharm. (2019-2020 Batch)



Gurpreet Singh

GPAT-2020

B Pharm. (2016-2020 Batch)



Suman

GPAT-2018

B.Pharm. (2014-2018 Batch)



Anil Kumar

GPAT-2017

B.Pharm. (2013-2017 Batch)



Kirandeep kaur

GPAT-2019

B.Pharm. (2015-2019 Batch)



Jatin Makker

GPAT-2022

B Pharm. (2017-2021 Batch)



Ashish

GPAT-2022

B Pharm. (2018-2022 Batch)



Kirpal Singh

GPAT-2023

B Pharm. (2019-2023 Batch)

GPAT Qualified STUDENTS

SACHDEVA
COLLEGE OF PHARMACY

Academic Accolades 2023-24



MD Wasim Akhtar
Batch 2020 B.Pharm
SGPA 8.75



Kirandeep Kaur
Batch 2020 B.Pharm
SGPA 8.75



Kanishka Sharma
Batch 2020 B.Pharm
SGPA 8.67



Zinney Moriju
Batch 2020 B.Pharm
SGPA 8.67



Harpreet Kaur
Batch 2022 B.Sc. MLS
SGPA 8.57



Eid Mohammad
Batch 2020 B.Pharm
SGPA 8.67



Nisha
Batch 2021 B.Pharm
SGPA 8.62



Ruchi Gupta
Batch 2021 B.Pharm
SGPA 8.08



Rozi Kumari
Batch 2022 B.Pharm
SGPA 8.58



Mehak Koundal
Batch 2022 B.Sc. MLS
SGPA 8.38



Komalpreet Kaur
Batch 2021 B.Sc. MLS
SGPA 8.68



Mukesh Kumari
Batch 2022 B.Pharm
SGPA 8.58



Yash Sharma
Batch 2022 B.Pharm
SGPA 8.33



Ramita Kaur
Batch 2023 B.Pharm
SGPA 8.83



Lakhwinder Singh
Batch 2023 B.Pharm
SGPA 8.80



Samarpita
Batch 2021 B.Sc. MLS
SGPA 9.00



Hari Om
Batch 2022
D Pharmacy



Gursimran Kaur
Batch 2023
D Pharmacy



Sanika Kalia
Batch 2023 B.Sc. MLS
SGPA 9.00



Jasneet Jassi
Batch 2023 B.Sc. MLS
SGPA 8.32

SACHDEVA
COLLEGE OF PHARMACY

College Committees

Internal Grievance Redressal Committee

NAME	DESIGNATION	PHONE	EMAIL	SIGNATURE/ APPOINTMENT ORDER
Sh. A K Sharma (Retd. Session Judge, Punjab)	OMBUDSMAN	9417316877	aksharma999@hotmail.com	Ref No: IKGPTU/REG/3377 dated 19/10/2016
Dr. Amanpreet Singh (Registrar)	Member	9478098019	registrar@ptu.ac.in	Ref No: IKGPTU/REG/3377 dated 19/10/2016
Prof. S.P.Goel (Principal)	Member	9417867745	spgoelindia@gmail.com	
Dr. Vandana Kharb (Professor/HOD)	Member	9417579575	vandana.scope@gmail.com	
Dr. Shilpi Sachdeva (Associatessor)	Member	9041055742	shilpifaculty.scope@gmail.com	

Woman Welfare / Internal Complaints Committee (ICC)

(The committee is constituted in accordance with the provisions described in the Sexual Harassment of Women at Workplace (Prevention, Prohibition and Redressal) Act, 2013.)

NAME	DESIGNATION	PHONE	EMAIL
Dr. Vandana Kharb (Professor/HOD)	Presiding Officer	9417579575	vandana.scope@gmail.com
Dr. Harminder Singh NGO	Member	9815610209	hs.salh59@gmail.com
Dr. Shilpi Sachdeva (Associate Professor)	Member	9041055742	shilpifaculty.scope@gmail.com
Mrs. Ritu Seehra (Office Coordinator)	Member	9872430105	seehra.ritu@gmail.com
Mrs. Sunita Raina (Computer Lab Instructor)	Member	9592968551	sunitarainachd@gmail.com

Anti ragging Committee of the College

Name	Design	Phone	Email
Prof. S.P. Goel	Chairman	9417867745	spgoelindia@gmail.com
Dr. Vandana	Member	9417579575	vandana.scope@gmail.com
Mrs. Ritu Seehra	Member	9872430105	seehra.ritu@gmail.com

SACHDEVA
COLLEGE OF PHARMACY

Scholarship Scheme

▶ Post Matric Scholarship for SC/ST Students (Punjab Residents)

- The Annual income of all members of the family from all sources should be less than Rs.2.5 Lakh per annum.
- Eligible students must submit their documents & application form related to scholarship within stipulated time.
- Applicable College fee and Student Maintenance Allowance will be claimed by the College from the Punjab Government.

▶ Post Matric Scholarship for SC/ST Students of Other States

- Students should check their respective state Welfare Department website for advertisements and time schedule for submission of forms.
- Forms duly completed and recommended by the college will be submitted by the students to their respective Welfare Departments.
- The scholarship amount as and when received from the State Government is adjusted against the pending dues of the student and balance is reimbursed to students.

▶ Post Matric Scholarship for OBC Students

- The Annual income of Parents/Guardians from all sources should be less than One Lakh per annum.
- Students are to pay college fee and all other charges. The scholarship amount approved by the Government will be paid direct to the students.
- In addition, maintenance allowance for day scholar and hosteller will be paid to the students as per the prescribed rates.
- Students should check their respective State Welfare Department notice for details and time schedule for applications.

▶ Post Matric Cum Mean Scholarship Scheme for Minority Communities

- Applicable to Sikh, Muslim, Christian, Parsi and Buddhist students.
- The Annual income of parents/guardians from all sources should be less than Rs. 2, 50,000 per annum.
- The Application are filled up 'online' on NSP Portal and application with all documents has to be submitted by the students duly recommended by the College.

▶ Scholarship Scheme for SwD (Students with Disability)

- Students with various types of disability are given scholarships and Books and Stationary grant of ₹2500/- per month and ₹6000/- per annum respectively.
- Application forms are filled up online. Eligible students should log on NSP Portal for details.

▶ Special Scholarship Scheme for Students of Jammu and Kashmir State

Students should log on to www.aicte-jk-scholarship.in for details and registration.

Rules & Regulations

General Instructions

- All the students are required to check the notice board regularly. No personal intimation will be given to any student.
- Information related to the Sessional marks, attendance shall be communicated to the residential postal address of every student, at least once in a semester.
- The students have to deposit the next semester fee in advance timely before the commencement of semester exams to avoid any late fee fine. The students are advised to deposit the fee well in time before the last date. The facility of direct deposit of fee in the college bank account from any location is also available, contact office for details. Do not try to deposit any fee without getting correct bank account details by SMS from the office.
- If a student faces any problem during the course he/ she can contact his/ her respective counselor/ class in-charge. The name of your counselor/ class in-charge can be seen from the notice board or from the office.
- No student will be allowed to leave the premises during college time without a genuine reason and a gate pass from the office. Students coming late have to enter name and time after 9:30 am at the security gate.
- It is mandatory for each student to put on his/ her identity card while in the college or during the college related activity outside.
- Any loss/ damage of identity card have to be reported immediately and would be re-issued on payment of the cost of the lost/ damaged identity card. The girls residing in the hostel are required to sign with time in the students' register at security gate while going out of the college during lunch time for the record.
- Each student has to wear the college uniform dress on every Monday and Friday. The uniform is also compulsory during college functions/ activities whenever notified except the day before Holi (even if a dress day). During lunch break, no gate pass/ entry is required except hostel girls. The students are required to maintain discipline and return within break time. Any deliberate/ negligent damage/ loss to the property or equipment shall be chargeable from the erring student(s) with intimation to the parents. The defacing of posters or writing any note on the walls or doors is also an act of deliberate damage to the property. Suitable fine may also be imposed.

Attendance Rules

- As per PCI/University rules, a student has to attend 80% of the classes held in Theory & Practical separately of each subject.
- The college has provided a relaxation of 5% in attendance on medical or due to any other reasons; and therefore, the student has to meet the 75% attendance criteria; otherwise he/she shall be detained.
- No marks can be given to the student in the internal assessment below 80%. Additional marks are given in the internal assessment from 80% to 100% attendance.

Note: No leave (owing to any minor/serious illness, accident, calamity, family functions/ conditions, participation in games/ sports/ competitions etc.) will be entertained to compensate the attendance. A relaxation in the attendance can be given only for the college supported events, after obtaining prior permission and the student should be physically present in the said event.

Consequences of Short Attendance (below 80%)

Detention- If a student is short of attendance in some subject(s) offered during a semester. A student detained in the subject(s) would only be allowed to appear in the subsequent university examinations on having attended the classes to compensate the shortage of attendance in the subject(s), when the subject(s) is/are offered as regular course.

Repetition of Semester- If a student is short of attendance in all the subjects offered during a semester, he / she shall be required to repeat the semester, along with the next batch of students. There will be a loss of one year and one semester fee.

Admission Cancelled- A student absent consecutively, without any notice or intimation, in writing to the Principal / Director, for more than 10 working days consecutively in a semester shall be deemed to have withdrawn from the course and his / her enrolment shall stand cancelled. Readmission can be done only on the payment of readmission fee.

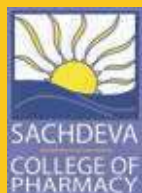
Reappear

Due to shortage of Attendance: A student detained from appearing in a semester examination of subject(s) due to shortage of attendance.

Attaining marks below 50%: Those candidates who obtain less than 50% marks in any of the course shall be placed under reappear. Reappear exams will be taken along the scheduled exams of the next semester. Improvement in internal examination is allowed only once before the next semester examinations.

Maximum duration for completion of degree requirements

Twice the duration of the normal course i.e. 8 yrs



SACHDEVA

COLLEGE OF PHARMACY

Reach Us

📍 Chandigarh – Ludhiana National Highway,
Vill. Kharar, Mohali, NH 95, Gharuan, Punjab

☎ +91-8437665000, +91-8195886500

📞 +91-9041055742

✉ info@scpmohali.in

👉 www.scpmohali.in



SACHDEVA
COLLEGE OF PHARMACY



SACHDEVA COLLEGE OF PHARMACY

(Affiliated to I K Gujral Punjab Technical University)

ADMISSION FORM

List of Documents

(To be submitted at the time of admission)

Students will have to submit the following documents along with the admission form:

1. Mark Sheet of Class 10th
2. Mark Sheet of Class 10 + 2
3. Mark Sheet of Graduation (For PG Courses)
4. Migration Certificate
5. Aadhar Card of Student & Parents (Father & Mother)
6. 5 Passport size photographs
7. Certificate of Schedule Caste/Other Backward Classes
8. Residence Certificate
9. Income Certificate
10. Bank Account Copy
11. Gap Certificate (If required)

Note: Sr No. 7,8 & 9 are applicable only for SC/OBC students and students having Post Matric Scholarship

SACHDEVA College of Pharmacy Gharuan, Mohali (Affiliated to I K Gujral Punjab Technical University)

Form No.													PHOTO		
Name of the Course															
Semester															
Name of the Applicant															
Aadhar Card No.							Mobile No.								
University Reg. No.							Date of Birth	D	D	M	M	Y	Y	Y	Y
E-Mail ID							Nationality								
Father's Name							Mother's Name								
Occupation					Income					Contact					
Tick (✓) the category:	GEN		SC		ST		OBC		SIKH MIN.						
Religion	Sikh		Hindu		Muslim		Christian		Any Other						
Residential Address															
	State							PIN CODE							
Correspondence Add.															
	State							PIN CODE							
Do you opt N.S.S ?	YES		NO												
Are you migrated from any other College/ University / Board ?	YES		NO												

If yes, mention the name of University / Board/ Institution:

Note: All personal details as per 10th Class Certificate



(Affiliated to I K Gujral Punjab Technical University)

Affidavit

Academic Information:

Class	Board / University	Year of Passing	Board / Uni. Roll No.	Marks Obtained/ Max Marks	% age	Subjects
Matric						
10 + 2						
Graduation Year - 1						
Graduation Year - 2						
Graduation Year - 3						
Graduation Year - 4						

Declaration:

1. I hereby declare that my personal details mentioned above are correct to the best of my knowledge. In case of any change of any of these, I will inform to my class advisor and HOD in writing, immediately.
2. I further submit that I will follow the institute academic calendar instructions and other instructions, given to me, time to time by my class advisor and HOD. I am aware of the rule that 75% attendance in each subject for the current semester is mandatory.
3. I know that my admission is provisional. (Subject to the registration with IKG PTU, Jalandhar.)
4. I solemnly declare that all the facts stated in the admission form are true to the best of my knowledge.
5. My ward will obey the code of conduct of the institute and do not indulge in any kind of in-disciplined activity while in and off the institution campus.
6. My ward will be solely responsible for any kind of accident/mishap cause don account of the above mentioned clause in 5.

Signature of Father/Mother/Gurdian

Signature of the Student

Dated

Admission Committee

Screening committee

Signature of the Principal

I, _____ (full name of student with Institute Roll Number) D/O Mr./Mrs./Ms. _____, having been admitted to Sachdeva College of Pharmacy, Gharuan, Kharar, have received or downloaded a copy of the UGC Regulations on Curbing the Menace of Ragging in Higher Educational Institutions, 2009, (hereinafter called the "Regulation") and have carefully read and fully understood the provision contained in said Regulations.

1. I have, in particular, perused clause 3 of the regulations and am aware as to what constitutes ragging.
2. I have also, in particular, perused clause 7 and clause 9.1 of the Regulations and am fully aware of the penal and administrative action that is liable to be taken against me in case I am found guilty of or abetting ragging, actively or passively, or being part of a conspiracy to promote ragging.
3. I hereby solemnly aver and undertake that
 - (a) I will not indulge in any behavior or act that may be constituted as ragging under clause 3 of the Regulations.
 - (b) I will not participate in or abet or propagate through any act of commission or omission that may be constituted as ragging under clause 3 of the Regulations.
4. I hereby affirm that, if found guilty of ragging, I am liable for punishment according to clause 9.1 of the Regulations, without prejudice to any criminal action that may be taken against me under any penal law or any law for the time being in force.
5. I hereby declare that I have not been expelled or debarred from admission in any institution in the country on account of being found guilty of, abetting or being part of a conspiracy to promote, ragging; and further affirm that, in case the declaration is found to be untrue, I am aware that my admission is liable to be cancelled.
6. Along with the above mentioned points I do hereby declare that
 - (a) I will obey the code of conduct of the institute and do not indulge in any kind of in-disciplined activity while in and off the institution campus.
 - (b) I will solely responsible for any kind of accident/mishap caused of the above mentioned clause (6.a).

Declared this _____ day of _____ month of _____ year _____

Signature of Students

Name

VERIFICATION

Verified that the content of this affidavit are true to the best of my knowledge and no part of the affidavit is false and nothing has been concealed and misstated therein.

Verified at _____ (place) on this the _____ (day) of _____ (month), 2018.

Signature of Students

